

May 16, 2024

Engineering Change Notification

This notice is to inform you of a change to the following character OLED display products:

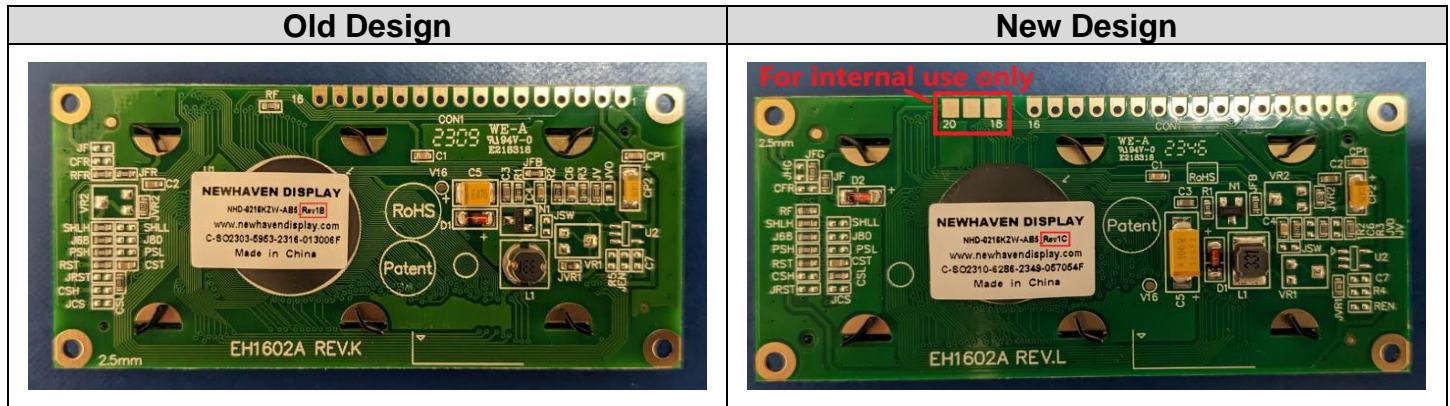
NHD-0216KZW-AB5
NHD-0216KZW-AY5
NHD-0216KZW-AB5-S

NHD-0216KZW-AG5
NHD-0216KZW-AB5-OSS
NHD-0216KZW-AW5-OSS

The booster IC used in the manufacturing of these displays has been replaced by a new IC with better availability. The PCB layout has been modified to accommodate this change. The layout change also includes the addition of pads 18, 19, and 20, which are for our internal testing only.

The changes described above should not have any impact on the part's electrical or mechanical compatibility within your system. All of our testing has found the new version to be compatible with existing platforms driving the old display. We fully expect the new displays to fit and function without any issue for our customers.

The new displays will be labeled with a different revision control number after the part number. See example below.



We understand that every customer's application is unique, and therefore recommend you test and validate samples of the updated design.

Samples may be purchased by contacting us at nhsales@newhavendisplay.com. When ordering samples, please specify that you would like to receive the new version.

Please visit www.newhavendisplay.com or email nhtech@newhavendisplay.com for further information or assistance with this change.

